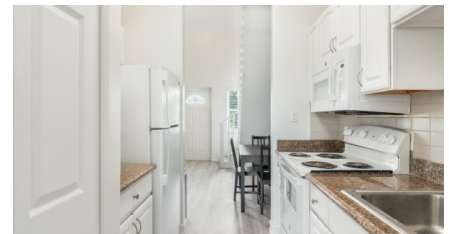
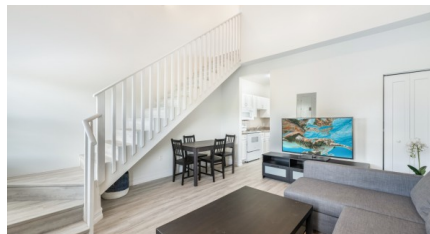


#50 Executive Suites | George Town - Investor Opportunity, 2 Bed Middle unit

George Town South

MLS# 419934

CI\$364,500





Zane Kuttner

+1 (345) 321-4611

zane.kuttner@remax.ky

Modern Living in the Heart of George Town

Centrally located on Walkers Road, over 15 feet above sea level, discover Executive Suites. A **gated community** offering stylish, **move-in-ready** one and two bedroom residences. Whether you're a **first-time buyer** or an **investor**, these homes deliver the perfect blend of comfort, convenience, and value. With **low strata fees** and a **prime location** just minutes from downtown George Town, don't miss this opportunity.

Step into a bright, open-plan living space with **double-height ceilings** and abundant natural light. Offering **2-bedrooms, 2-bathrooms** and **831 square feet**, it's no surprise these are popular rental properties offering strong returns. The modern galley kitchen flows seamlessly into the living and dining area, creating a welcoming space for everyday living or entertaining.

The downstairs guest bedroom with **ensuite** and **built-in closets** gives this property great potential for couples or families. Leading upstairs to the primary bedroom which also boasts an ensuite and dual closets, these properties offer **exceptional storage space**. With contemporary furnishings and **washer and dryer included**, this turnkey property will provide long-term value.

At Executive Suites, safety and security are a priority. Enjoy peace of mind with **controlled access** and a secure environment for you and your loved ones. With its **central location**, you're just minutes away from key amenities such as **Smith Cove, George Town Hospital**, and the new **Hurley's Market**.

With **strong rental demand** and **low vacancy rates**, Executive Suites offers **excellent potential for high yield returns** and long-term value. Don't miss this rare opportunity to own a **modern, secure, and well-located property** at an unbeatable value. Get in touch now to schedule your tour.

Please Note: Photos and videos are of a similar unit and are provided for reference only. All units share the same layout and design.

Property Features

Type
Condominium (For Sale)

Status
Increased

View
Inland

Listing Type
Condominium

Bed
2

Bath
2

Sq Ft
831

Block/Parcel
14E / 795H50

Area
30

Year Built
2009