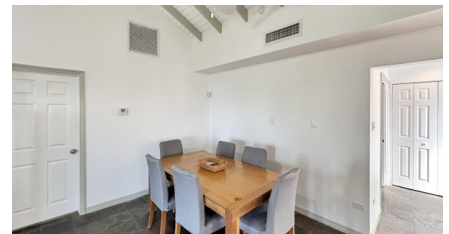


## Prospect Reef #7 Oceanfront Cottage

Spotts

MLS# 419823

**CI\$849,000**





**Zane Kuttner**  
**+1 (345) 321-4611**  
**zane.kuttner@remax.ky**

Welcome home to your private oceanfront cottage at **Prospect Reef**, where the turquoise waters of the Caribbean Sea meet peaceful island living. This **fully detached 2-bedroom, 2-bath residence** offers spectacular ocean views from every room and a rare opportunity to own a standalone home in one of Grand Cayman's most charming seaside communities. Step inside this bright and airy cottage and be greeted by **beautiful vaulted ceilings**, an open-concept living space, and a **spacious 40-foot screened patio**—perfect for morning coffee, evening sunsets, and enjoying the cool sea breezes. The property has been thoughtfully renovated, featuring: **Upgraded kitchen** with quartz countertops, stainless steel appliances, and a top-of-the-line gas range **Modern bathrooms** with a walk-in shower in the primary suite and a soaking tub in the guest bath **New ceiling fans**, hurricane shutters, hurricane-rated entry doors, and a standing seam roof **Two loft spaces for storage** and **two dedicated parking spaces**. Situated less than 20 feet from the oceanfront pool, you'll enjoy stunning views of the coastline from **Spotts Beach to South Sound**. With 440 feet of private shoreline, Prospect Reef offers direct access to **two sandy coves**, ideal for kayaking, snorkeling, and swimming. Set on **3.5 acres of beautifully landscaped grounds**, the development consists of only **13 cottages and 6 duplexes**, offering exceptional privacy and a true sense of community. The well-managed strata keeps fees low (just **CI\$750 per month**, including insurance and landscaping). This is island living at its finest—tranquil, private, and surrounded by natural beauty. **Prospect Reef #7** represents a truly rare offering in Grand Cayman's oceanfront market.

Property Features

Type	Status	View
Residential (For Sale)	New	Water Front
Listing Type	Bed	Bath
Standalone Home (Part of Strata)	2	2
Sq Ft	Block/Parcel	Area
1,204	25C / 66H7	40
Year Built		
1979		