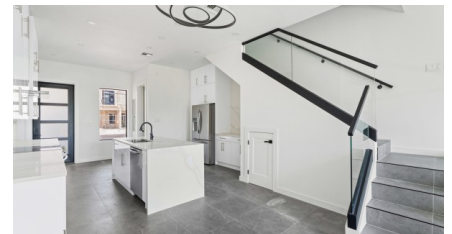


## Prive #8 (Assignment - Motivated Seller)

South Sound

MLS# 419783

**CI\$785,000**





**Zane Kuttner**  
**+1 (345) 321-4611**  
**[zane.kuttner@remax.ky](mailto:zane.kuttner@remax.ky)**

Introducing Prive! Welcome to the newest community in South Sound brought to you by Baraud Development. Located just past the famous boardwalk on Adiago Drive, next to Bahia – this location is quiet and peaceful.

This brand new gated community delivers pool and lake views, high-end finishes, and low strata & insurance fees - this residence offers the perfect blend of modern luxury and investment potential. Whether you're looking for a private retreat or a high-performing rental property, this home delivers both style and smart value. Sleek, modern design with high-end upgrades, this spacious 2-bedroom, 2.5-bathroom townhome with carport, spans 1,609 sq ft. The 10-foot ceilings and oversized windows & sliding glass doors flood the space with natural light, highlighting the elegant white interiors and high-end finishes. The open-concept kitchen features ceiling-height cabinets, waterfall-veined quartz countertops, a full backsplash, and stainless steel professional series appliances—perfect for those who love to cook and entertain.

Spacious inside and out – with over 1,600 SQFT this home is perfect to entertain. There is a covered carport with ample parking in your driveway. Unit #8 is perfectly positioned near the pool yet offering nice privacy. This home has been well designed with over C\$20,000 in upgrades throughout.

Seller is offering great cash back incentives for stamp duty, closing costs and furniture. This is a Contract of Assignment. Great opportunity! Call today!

**Property Features**

|                        |              |                        |
|------------------------|--------------|------------------------|
| Type                   | Status       | View                   |
| Condominium (For Sale) | New          | Garden View, Pool View |
| Listing Type           | Bed          | Bath                   |
| Condominium            | 2            | 2.5                    |
| Sq Ft                  | Block/Parcel | Area                   |
| 1,609                  | 21C / 164H8A | 40                     |
| Year Built             |              |                        |
| 2025                   |              |                        |