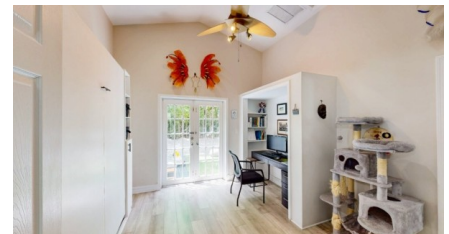


## Happy 3 bed Townhome at Garden Retreat in GT

George Town South

MLS# 419706

**CI\$760,000**





**Zane Kuttner**  
**+1 (345) 321-4611**  
**[zane.kuttner@remax.ky](mailto:zane.kuttner@remax.ky)**

Fantastic Family & Pet-Friendly Townhouse in the Heart of George Town. Perfectly positioned where George Town meets South Sound, this beautifully maintained townhouse offers unmatched convenience. Just steps from Cayman Prep Primary School and the Pickleball Club, and minutes from financial hubs such as Cricket Square, Cayman Enterprise City, and Camana Bay. To the south, you'll find South Sound's premier sports clubs (Tennis, Rugby, Squash), along with stellar Shore Diving and Smith Cove Beach. Seven Mile Beach and its world-class dining are only 12 minutes away. All 3 bedrooms are en-suite with high ceilings and generous wardrobe space. Ground floor bedroom offers flexibility for sleep or office, with a built-in Murphy bed & closet. Bright open-plan living with granite countertops, stainless steel appliances, dedicated pantry, and discreet laundry area and tons of tucked away storage. Step outside to your private outdoor retreat with screened patio, plus an open backyard bordered by lush forest—ideal for play, yoga, or entertaining. The Community of "The Retreats" offers resort-style living, with large, fenced pool and adjacent children's pool surrounded by Areca palms, well-equipped fitness centre just steps from the unit, 2 private parking spots at the front door, plus 3 convenient visitor spaces nearby. This property is move-in ready, family and pet-friendly, and an excellent investment opportunity with strong rental potential. Currently owner-occupied, professional photos coming soon.

**Property Features**

|                        |              |             |     |      |
|------------------------|--------------|-------------|-----|------|
| Type                   | Status       | View        |     |      |
| Condominium (For Sale) | Increased    | Garden View |     |      |
| Listing Type           | Width        | Depth       | Bed | Bath |
| Condominium            | 386.00       | 430.00      | 3   | 3    |
| Sq Ft                  | Block/Parcel | Area        |     |      |
| 1,720                  | 14D / 428H24 | 30          |     |      |
| Year Built             |              |             |     |      |
| 2003                   |              |             |     |      |