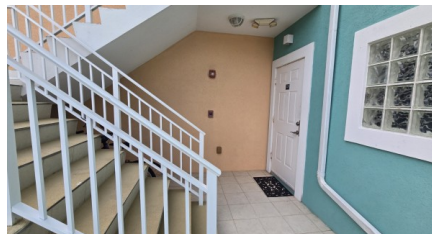


The Careenage 2 Bed End Unit

Prospect

MLS# 419508

CI\$625,000



Zane Kuttner

+1 (345) 321-4611

zane.kuttner@remax.ky

The Careenage, a Modern 2 Bed, 2 Bath End Unit Condo on Canal Frontage in Grand Harbour. Close to Town, Seven Mile with Minimal Traffic Issues, this Ground Floor Townhouse (2 Level) Style Condo Exudes Charm. Modern Open Plan Design with Large Covered Patio on the Water View. Walk to Restaurants and Numerous Retail Businesses in Grand Harbour, Just 400 Meters Away. Pet Friendly, The Complex Includes a Pool, Gym, and Ample Parking. Attractive and Sought After Rental for Investors.

Property Features

Type
Condominium (For Sale)

Status
Current

View
Canal Front

Listing Type
Condominium

Bed
2

Bath
2

Sq Ft
986

Block/Parcel
22E / 418H24

Area
40

Year Built
2008