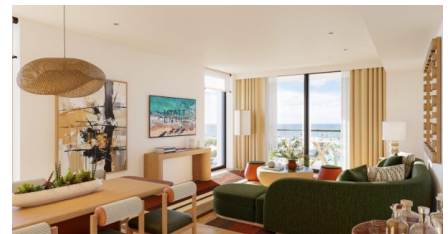


Hyatt Centric Resort - Beach View 2 BR Suite

W Bay Bch South

MLS# 419428

US\$2,595,000





Zane Kuttner

+1 (345) 321-4611

zane.kuttner@remax.ky

JUST ANNOUNCED AND CURRENTLY SELLING AT LOW PRE-CONSTRUCTION PRICES - HUGE POTENTIAL FOR SUBSTANTIAL CAPITAL APPRECIATION. Unique, very well proportioned 2 BR beach view Suite with a wide terrace area. Both bedrooms and the living room/dining room are on the beachfront side and all rooms have beach views. This Suite has ability to also be locked off for a combination of a 1 BR Suite with attached kitchen and living room/dining room, as well as a separate individual Studio Suite. Great for rental options to earn more income. Very well designed with a King bedroom and a 2 Queen bedroom. It has some incredible views out through the center opening of Sunset Cove, across the pools and landscaping out to the sandy beach and Caribbean Sea. And there are always amazing sunset views, all year long. Large size for a 2 BR and great price point. Perfect for an owner's use and/or solid resort rental income. Complete with a full kitchen, washer/dryer, and owner's lock-off closet. Construction is planned to start early next year and complete in 2028. There is a vast array of resort facilities, services, and amenities; large freeform pool with full service bar and grill, beach lagoon protected by breakwater barriers to ensure sandy beachfront at all times, rooftop restaurant/bar and lounge featuring island wide views, Café and Marketplace, 3 meal restaurant with indoor/outdoor seating, food and beverage service planned for beach area, pickleball/tennis courts, fitness Studio, ballroom event facilities and boardroom, 24 hour front desk and security, concierge and valet service, room service, and much more. Truly a tremendous value for this very prestigious Suite supported by a prominent international resort brand!

Property Features

Type
Condominium (For Sale)

Status
Current

View
Beach View

Listing Type
Condominium

Bed
2

Bath
2.5

Sq Ft
1,625

Block/Parcel
13B / 124REM1-620/618

Area
25

Year Built
2028