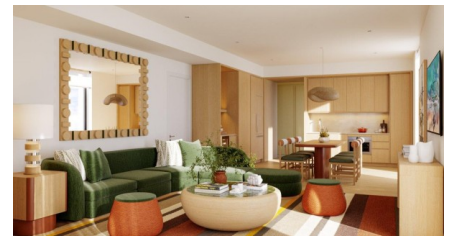


## Hyatt Centric Resort - Beach View 2 BR Suite

W Bay Bch South

MLS# 419425

**US\$2,595,000**





**Zane Kuttner**

+1 (345) 321-4611

[zane.kuttner@remax.ky](mailto:zane.kuttner@remax.ky)

JUST ANNOUNCED AND CURRENTLY SELLING AT LOW PRE-CONSTRUCTION PRICES - HUGE POTENTIAL FOR SUBSTANTIAL CAPITAL APPRECIATION. Unique, very well proportioned 2 BR beach view Suite with a wide terrace area. Both bedrooms and the living room/dining room are on the beachfront side and all rooms have beach views. This Suite has the ability to also be locked off for a combination of a 1 BR Suite with attached kitchen and living room/dining room, as well as a separate individual Studio Suite. Great for rental options to earn more income. Well designed with a King bedroom and a 2 Queen bedroom. It has some incredible views overtop of the buildings out to the sandy beach and Caribbean Sea. There are always amazing sunset views, all year long. Large size for a 2 BR and with a great price point. Perfect for an owner's use and/or solid resort rental income. Complete with a full kitchen, washer/dryer, and owner's lock-off closet. Construction is planned to start early next year and complete in 2028. There is a vast array of resort facilities, services, and amenities; large freeform pool with full service bar and grill, beach lagoon protected by breakwater barriers to ensure sandy beachfront at all times, rooftop restaurant/bar and lounge featuring island wide views, Café and Marketplace, 3 meal restaurant with indoor/outdoor seating, food and beverage service planned for beach area, pickleball/tennis courts, fitness Studio, ballroom event facilities and boardroom, 24 hour front desk and security, concierge and valet service, room service, and much more. Truly a tremendous value for this very prestigious Suite supported by a prominent international resort brand!

## Property Features

Type  
Condominium (For Sale)

Status  
Current

View  
Beach View

**Listing Type**  
**Condominium**

**Bed**  
**2**

**Bath**  
**2.5**

**Sq Ft**  
**1,625**

**Block/Parcel**  
**13B / 124REM1-710/708**

**Area**  
**25**

**Year Built**  
**2028**