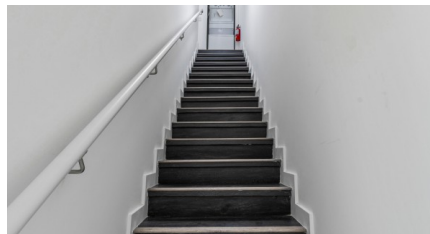
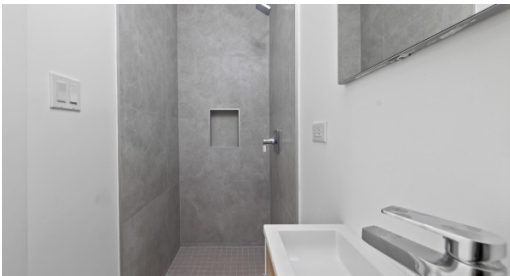


YARL 3 BED TOWNHOME #110 (END UNIT)

George Town East

MLS# 418150

CI\$689,000





Zane Kuttner
+1 (345) 321-4611
zane.kuttner@remax.ky

LARGEST FLOOR PLAN IN COMPLEX AND ONLY AVILABLE UNIT LEFT!

Introducing George Town's newest, multi-phase residential community, YARL! YARL is filled with amenities including a lovely pool area, pickleball court, gym, clubhouse and kids play area to name a few. This gated community is conveniently located on Linford Pierson Highway next to Downtown Reach. The location is amazing with direct proximity to schools, Grand Harbour, Harbour Reach, supermarkets, George Town Hospital and direct access to Seven Mile Beach Corridor. This neighbourhood will feature 1 bed, 1 bed plus den, 2 bed and 3 bed options - perfect for a primary residence or rental investment.

Built to withstanding all weather as well as being energy efficient these homes are constructed with super strong concrete block, spray foam insulation has been added to the attic, hurricane impact windows and doors as well as a standing seam metal roof. Rest assured knowing the Developer, National Builders, has completed numerous fantastic communities in Cayman over the past couple decades. Inquire today for your Information and Sales Brochure! Unit 110 will be complete Q1 2026.

Property Features

Type	Status	View
Condominium (For Sale)	Current	Garden View
Listing Type	Bed	Bath
Condominium	3	2.5
Sq Ft	Block/Parcel	Area
1,500	20D / 472H44	40
Year Built		
2024		