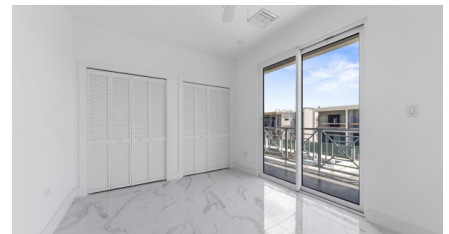
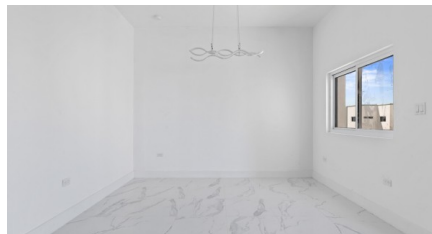
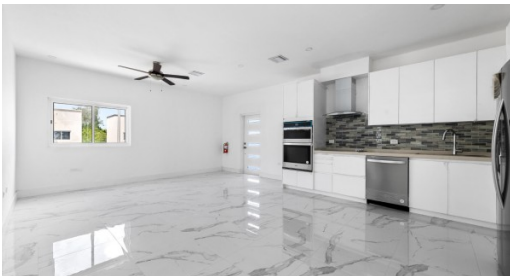


YARL 2 BED CONDO #28 PHASE 2

George Town East

MLS# 417923

CI\$479,000





Zane Kuttner
+1 (345) 321-4611
zane.kuttner@remax.ky

FINAL PHASE 3 TO BE SOLD AT YARL – LAST CHANCE TO BUY AT LOW PRE-CONSTRUCTION PRICES!

Introducing George Town's newest, multi-phase residential community, YARL! With the incredible sales demand of Phases 1 and 2, we are now launching the Final Phase 3! YARL is filled with amenities including a lovely pool area, pickleball court, gym, clubhouse and kids play area to name a few. This gated community is conveniently located on Linford Pierson Highway next to Downtown Reach. The location is amazing with direct proximity to schools, Grand Harbour, Harbour Reach, supermarkets, George Town Hospital and direct access to Seven Mile Beach Corridor. This neighbourhood will feature 1 bed, 1 bed plus den, 2 bed and 2 bed plus den options - perfect for a primary residence or rental investment.

Built to withstanding all weather as well as being energy efficient these homes are constructed with super strong concrete block, hurricane impact windows and doors as well as a standing seam metal roof. Rest assured knowing the Developer, National Builders, has completed numerous fantastic communities in Cayman over the past couple decades. Estimated completion is Q1 2025. Inquire today for your Information and Sales Brochure!

Photos of similar unit.

Property Features

Type	Status	View
Condominium (For Sale)	Increased	Garden View
Listing Type	Bed	Bath
Condominium	2	1
Sq Ft	Block/Parcel	Area
920	20D / 472H13-93	40
Year Built		
2025		

Additional Features

Number of Units
78