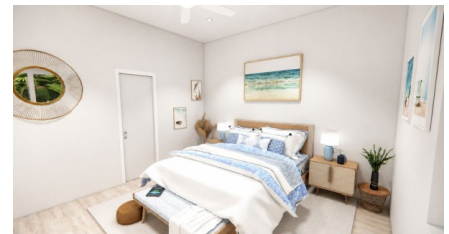


Conch Point Landing Unit 8 | Single-Level 2 Bed Condo

W Bay North East

MLS# 420797

CI\$625,000





Zane Kuttner

+1 (345) 321-4611

zane.kuttner@remax.ky

Nestled beside Barker's National Park on the peaceful northern coast of West Bay, Conch Point Landing offers modern island living surrounded by natural beauty, white sandy beaches, and turquoise waters.

These spacious single-level residences feature open-plan living, contemporary finishes, quartz countertops, porcelain tile flooring, modern appliances, and large covered patios designed for effortless indoor-outdoor living.

Set in one of Grand Cayman's most scenic coastal areas, Conch Point Landing combines a relaxed island lifestyle with everyday convenience. West Bay offers a growing selection of restaurants, shopping, schools, and lifestyle amenities, while the Esterley Tibbetts Highway provides easy access to Seven Mile Beach, Camana Bay, and George Town.

Perfect for those seeking a peaceful island setting, with cycling, walking, kitesurfing, beach days, and Cayman's natural surroundings right on your doorstep. An ideal choice for owner-occupiers, vacation homeowners, or investors looking for modern living near the coast. **Let nature be your neighbor.**

Contact today to learn more and secure your residence at Conch Point Landing with an easy 10% deposit.

Property Features

Type
Condominium (For Sale)

Status
New

View
Garden View

Listing Type
Condominium

Bed
2

Bath
2

Sq Ft
1,294

Block/Parcel
8A / 222H8

Area
10

Year Built
2028